

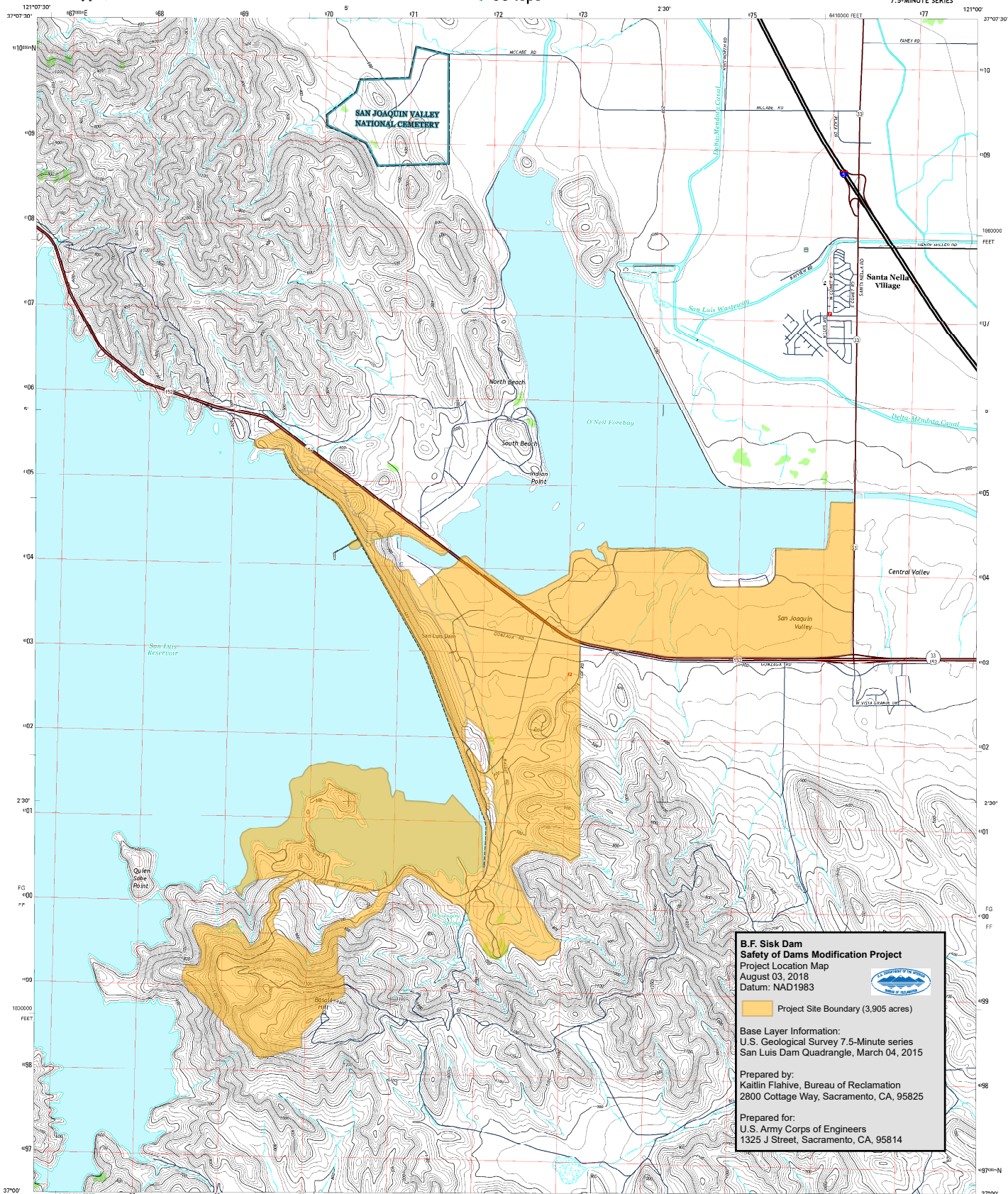
Enclosure 1 - Vicinity Map




U.S. DEPARTMENT OF THE INTERIOR
U.S. GEOLOGICAL SURVEY



SAN LUIS DAM QUADRANGLE
CALIFORNIA-MERCED CO.
7.5-MINUTE SERIES



**B.F. Sisk Dam
Safety of Dams Modification Project**
Project Location Map
August 03, 2018
Datum: NAD1983



Project Site Boundary (3,905 acres)

Base Layer Information:
U.S. Geological Survey 7.5-Minute series
San Luis Dam Quadrangle, March 04, 2015

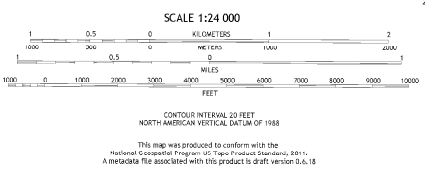
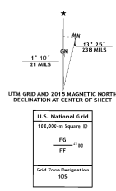
Prepared by:
Kaitlin Flahive, Bureau of Reclamation
2800 Cottage Way, Sacramento, CA, 95825

Prepared for:
U.S. Army Corps of Engineers
1325 J Street, Sacramento, CA, 95814

Produced by the United States Geological Survey
North American Datum of 1983 (NAD83)
World Geodetic System of 1984 (WGS84) Projection and
1,000-meter grid: Universal Transverse Mercator, Zone 10S
15,000-foot Grid: California Coordinate System of 1983 (Zone 3)

This map is not a legal instrument. Boundaries may be generalized for this map scale. Private lands within government operations may not be shown. Obtain permission before entering private lands.

Imagery: 8/2013
Roads: 8/2013
Hydrography: 8/2013
Contours: 8/2013
Elevation: 8/2013
Multiple sources and methods: 8/2013
Public Land Survey System: 8/2013




ROAD CLASSIFICATION

Expressway	Local Connector
Secondary Road	Local Road
Ramp	4WD
Interstate Route	US Route
	State Route

1	2	3	1. Crenshaw Peak
4	5	6	2. Howard Ranch
7	8	9	3. Hogback
			4. Pacheco Pass
			5. Sierra
			6. Mariposa Peak
			7. Los Banos Valley
			8. Cortiguera Peak

ADJOINING QUADRANGLES

SAN LUIS DAM, CA
2015

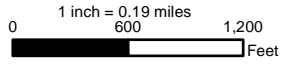


Enclosure 2 - Aquatic Resources Delineation Maps

B.F. SISK Dam

Safety of Dams Modification Project
Aquatic Resources Delineation

Datum: NAD 1983
Prepared by:
Kaitlin Flahive, Bureau of Reclamation
2800 Cottage Way, Sacramento, CA, 95825
Service Layer Source Credits: ESRI, DigitalGlobe,
GeoEye, Earthstar Geographics, CNE S/Airbus DS,
USDA, USGS, AeroGRID, IGN



- Data Points 2018
- Data Points 2010
- Project Boundary 2018
- Project Boundary 2010
- Palustrine Emergent Wetland (PEW)
- Ditch (D)
- Ephemeral Drainage (ED)
- Fresh Emergent Wetland (FEW)
- Intermittent Stream (IS)
- Lacustrine (LAC)
- Non-waters mud sld
- Seasonal Wetland (SW)
- Settling Pond (SP)
- Perennial Wetland (PW)



121°60'W

121°53'0"W

121°50'0"W

121°4'30"W

37°43'30"N

37°40'0"N

B.F. SISK Dam

Safety of Dams Modification Project
Aquatic Resources Delineation

Datum: NAD 1983

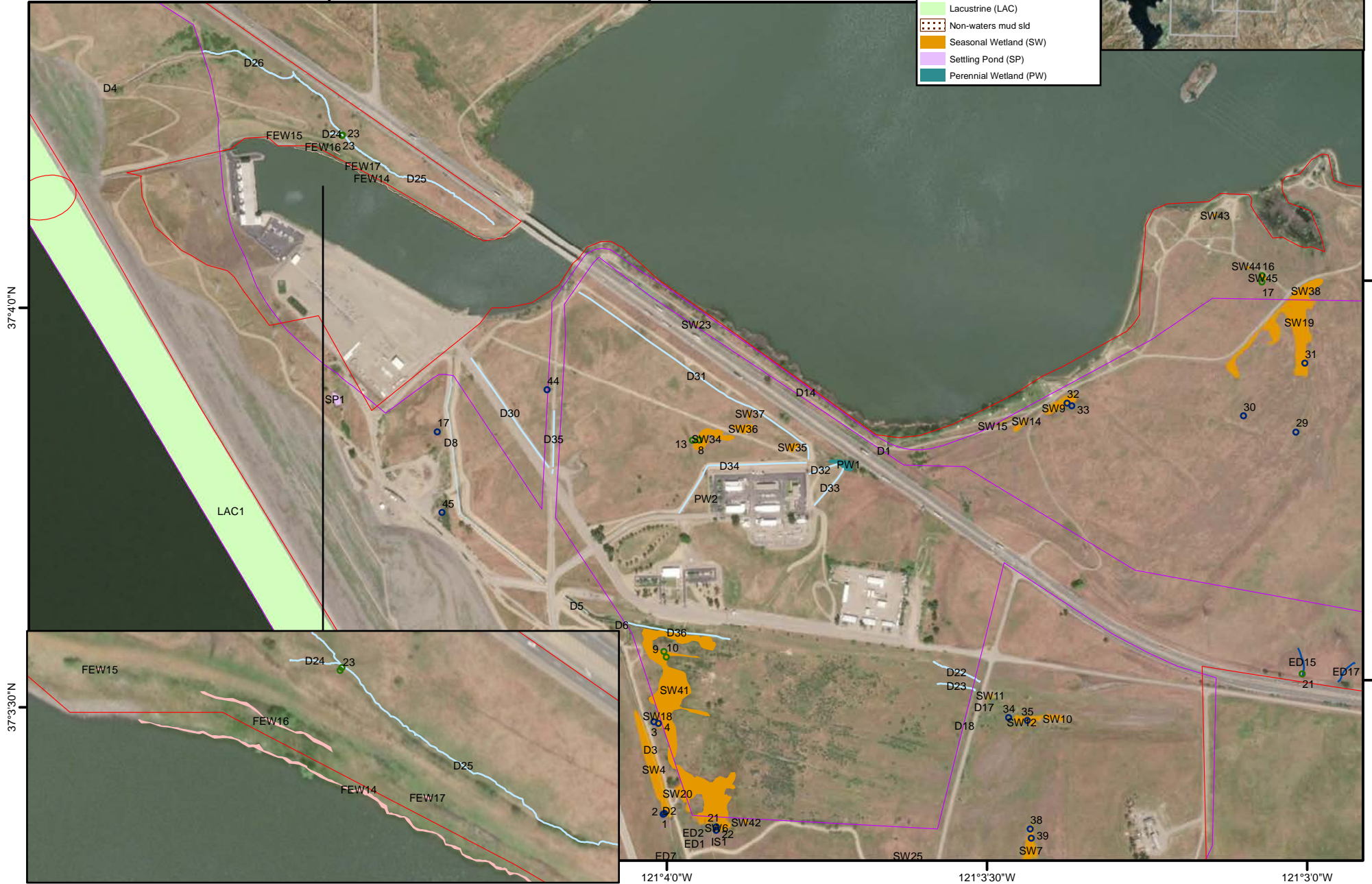
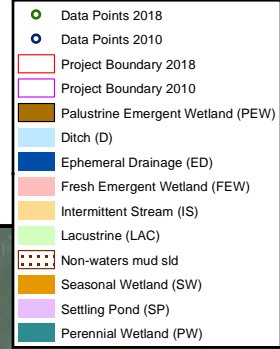
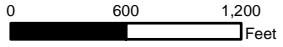
Prepared by:

Kaitlin Flahive, Bureau of Reclamation
2800 Cottage Way, Sacramento, CA, 95825

Service Layer Source Credits: ESRI, DigitalGlobe,
GeoEye, Earthstar Geographics, CNE S/Airbus DS,
USDA, USGS, AeroGRID, IGN



1 inch = 0.19 miles



B.F. SISK Dam

Safety of Dams Modification Project
Aquatic Resources Delineation

Datum: NAD 1983

Prepared by:

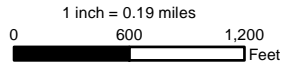
Kaitlin Flahive, Bureau of Reclamation

2800 Cottage Way, Sacramento, CA, 95825

Service Layer Source Credits: ESRI, DigitalGlobe,

GeoEye, Earthstar Geographics, CNE S/Airbus DS,

USDA, USGS, AeroGRID, IGN



- Data Points 2018
- Data Points 2010
- ▭ Project Boundary 2018
- ▭ Project Boundary 2010
- ▭ Palustrine Emergent Wetland (PEW)
- ▭ Ditch (D)
- ▭ Ephemeral Drainage (ED)
- ▭ Fresh Emergent Wetland (FEW)
- ▭ Intermittent Stream (IS)
- ▭ Lacustrine (LAC)
- ▭ Non-waters mud sid
- ▭ Seasonal Wetland (SW)
- ▭ Settling Pond (SP)
- ▭ Perennial Wetland (PW)



B.F. SISK Dam

Safety of Dams Modification Project
Aquatic Resources Delineation

Datum: NAD 1983

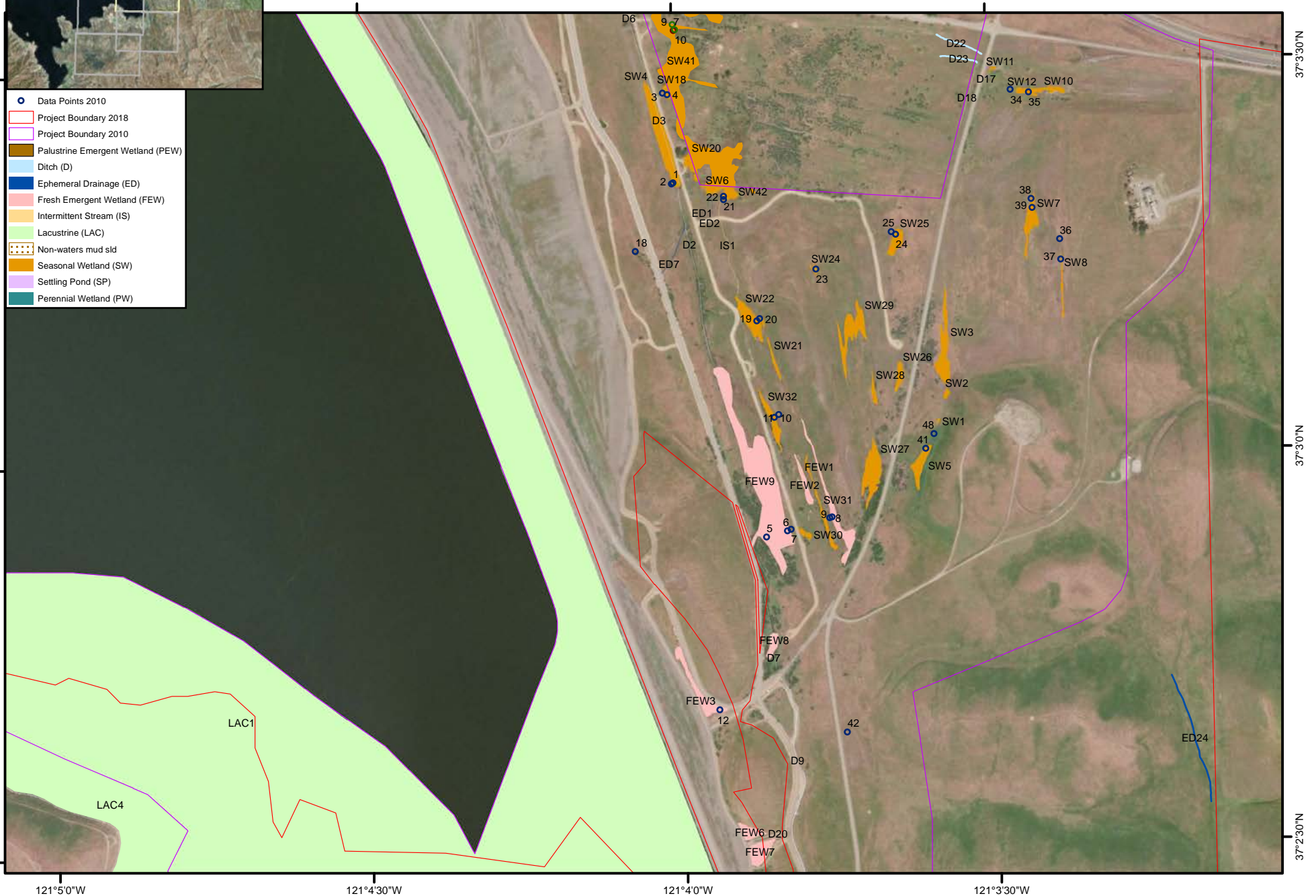
Prepared by:
Kaitlin Flahive, Bureau of Reclamation
2800 Cottage Way, Sacramento, CA, 95825
Service Layer Source Credits: ESRI, DigitalGlobe,
GeoEye, Earthstar Geographics, CNE S/Airbus DS,
USDA, USGS, AeroGRID, IGN



1 inch = 0.19 miles
0 600 1,200
Feet



- Data Points 2010
- ▭ Project Boundary 2018
- ▭ Project Boundary 2010
- ▭ Palustrine Emergent Wetland (PEW)
- ▭ Ditch (D)
- ▭ Ephemeral Drainage (ED)
- ▭ Fresh Emergent Wetland (FEW)
- ▭ Intermittent Stream (IS)
- ▭ Lacustrine (LAC)
- ▭ Non-waters mud sld
- ▭ Seasonal Wetland (SW)
- ▭ Settling Pond (SP)
- ▭ Perennial Wetland (PW)



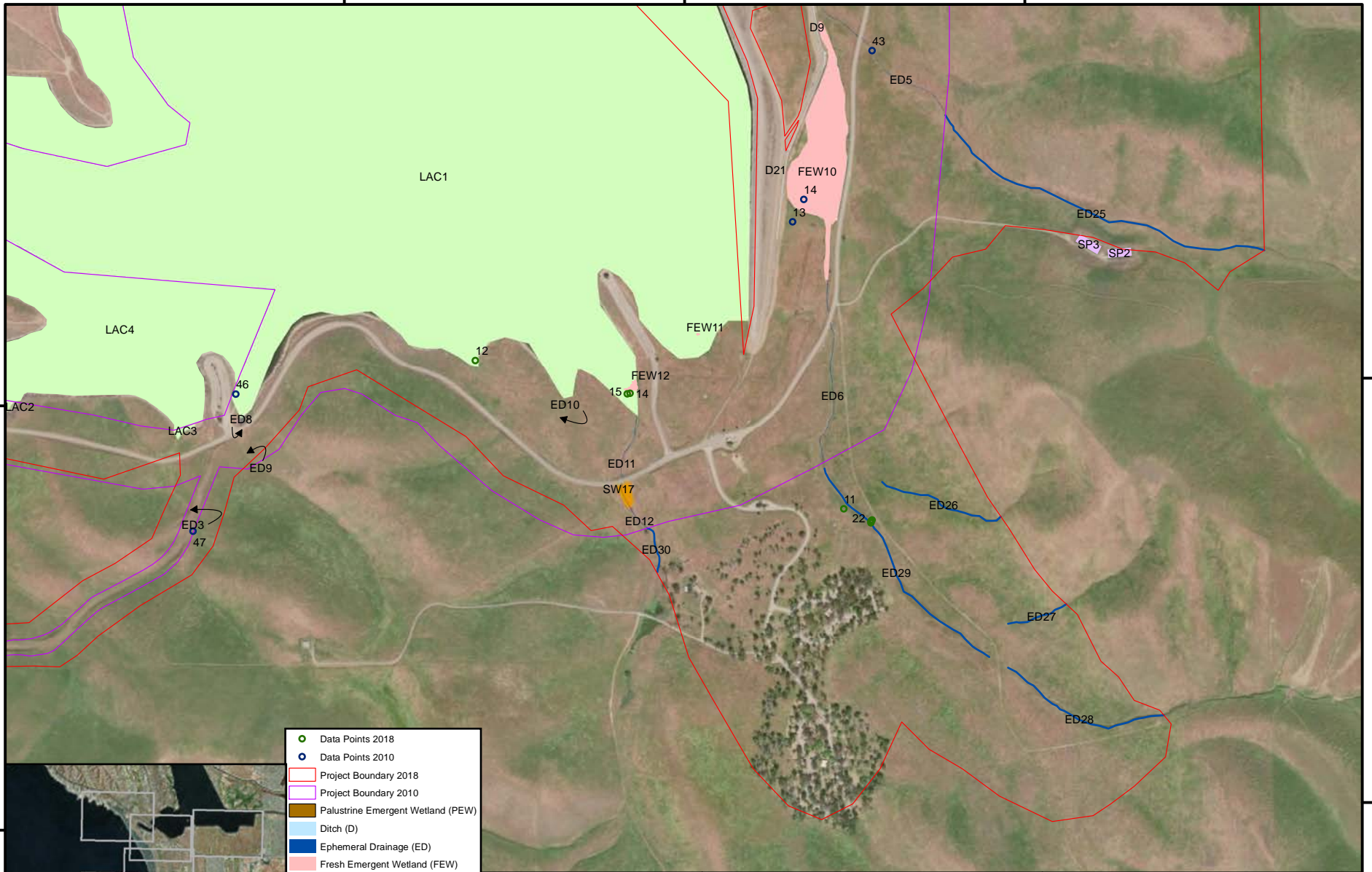
121°4'30"W

121°4'0"W

121°3'30"W

37°2'0"N

37°1'30"N

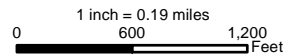


- Data Points 2018
- Data Points 2010
- Project Boundary 2018
- Project Boundary 2010
- Palustrine Emergent Wetland (PEW)
- Ditch (D)
- Ephemeral Drainage (ED)
- Fresh Emergent Wetland (FEW)
- Intermittent Stream (IS)
- Lacustrine (LAC)
- Non-waters mud sld
- Seasonal Wetland (SW)
- Settling Pond (SP)
- Perennial Wetland (PW)



B.F. SISK Dam

Safety of Dams Modification Project
Aquatic Resources Delineation



Datum: NAD 1983
Prepared by:
Kaitlin Flahive, Bureau of Reclamation
2800 Cottage Way, Sacramento, CA, 95825
Service Layer Source Credits: ESRI, DigitalGlobe,
GeoEye, Earthstar Geographics, CNE S/Airbus DS,
USDA, USGS, AeroGRID, IGN



- Data Points 2018
- Data Points 2010
- Project Boundary 2018
- Project Boundary 2010
- Palustrine Emergent Wetland (PEW)
- Ditch (D)
- Ephemeral Drainage (ED)
- Fresh Emergent Wetland (FEW)
- Intermittent Stream (IS)
- Lacustrine (LAC)
- Non-waters mud sld
- Seasonal Wetland (SW)
- Settling Pond (SP)
- Perennial Wetland (PW)



B.F. SISK Dam

Safety of Dams Modification Project
Aquatic Resources Delineation

1 inch = 0.19 miles
0 600 1,200 Feet

Datum: NAD 1983

Prepared by:
Kaitlin Flahive, Bureau of Reclamation
2800 Cottage Way, Sacramento, CA, 95825
Service Layer Source Credits: ESRI, DigitalGlobe,
GeoEye, Earthstar Geographics, CNE S/Airbus DS,
USDA, USGS, AeroGRID, IGN



121°6'0"W

121°5'30"W

121°50"W

121°4'30"W

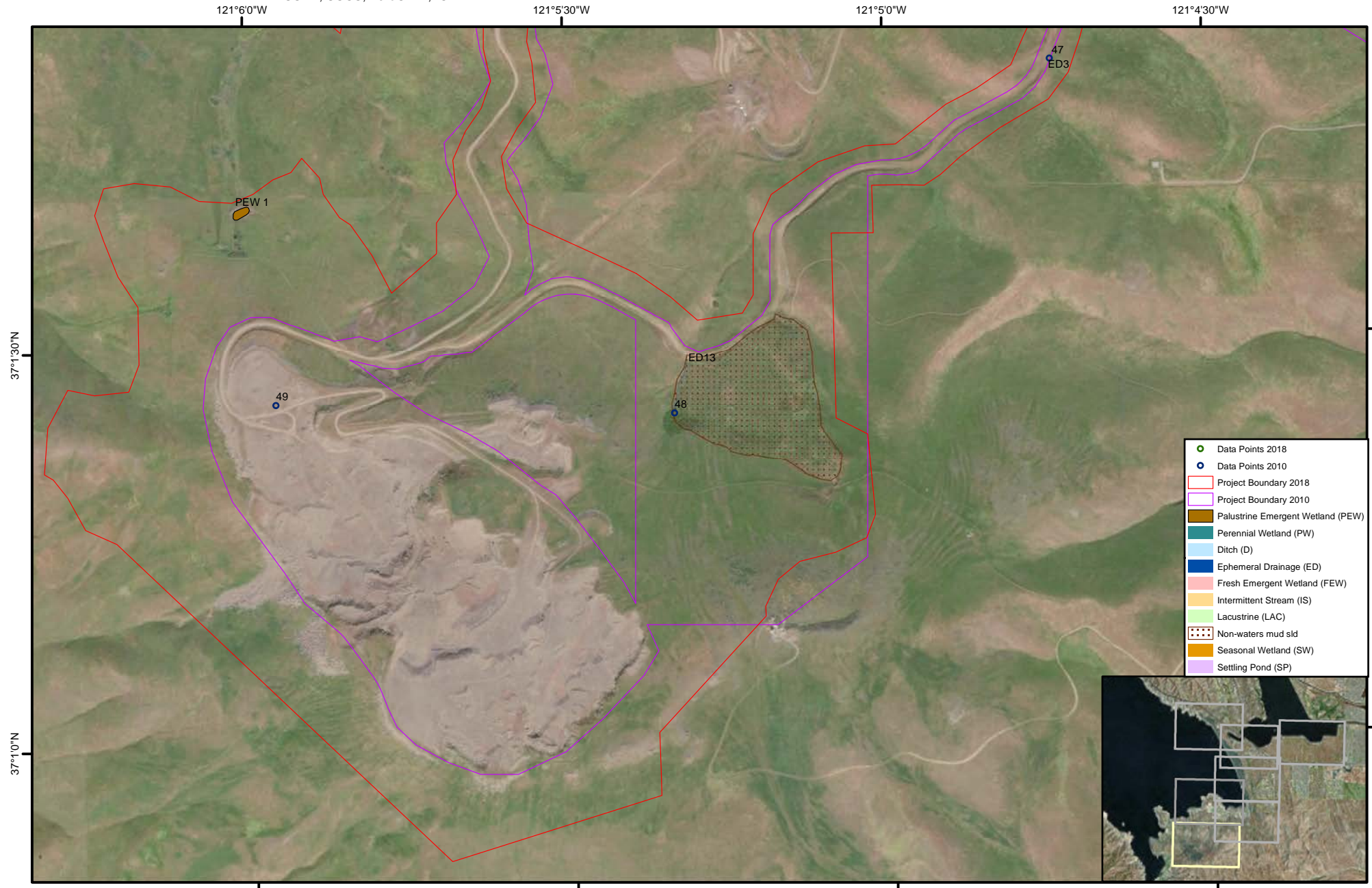
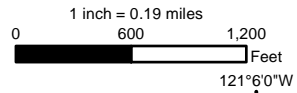
37°23'0"N

37°20'0"N

B.F. SISK Dam

Safety of Dams Modification Project
Aquatic Resources Delineation

Datum: NAD 1983
Prepared by:
Kaitlin Flahive, Bureau of Reclamation
2800 Cottage Way, Sacramento, CA, 95825
Service Layer Source Credits: ESRI, DigitalGlobe,
GeoEye, Earthstar Geographics, CNE S/Airbus DS,
USDA, USGS, AeroGRID, IGN



- Data Points 2018
- Data Points 2010
- Project Boundary 2018
- Project Boundary 2010
- Palustrine Emergent Wetland (PEW)
- Perennial Wetland (PW)
- Ditch (D)
- Ephemeral Drainage (ED)
- Fresh Emergent Wetland (FEW)
- Intermittent Stream (IS)
- Lacustrine (LAC)
- Non-waters mud sld
- Seasonal Wetland (SW)
- Settling Pond (SP)



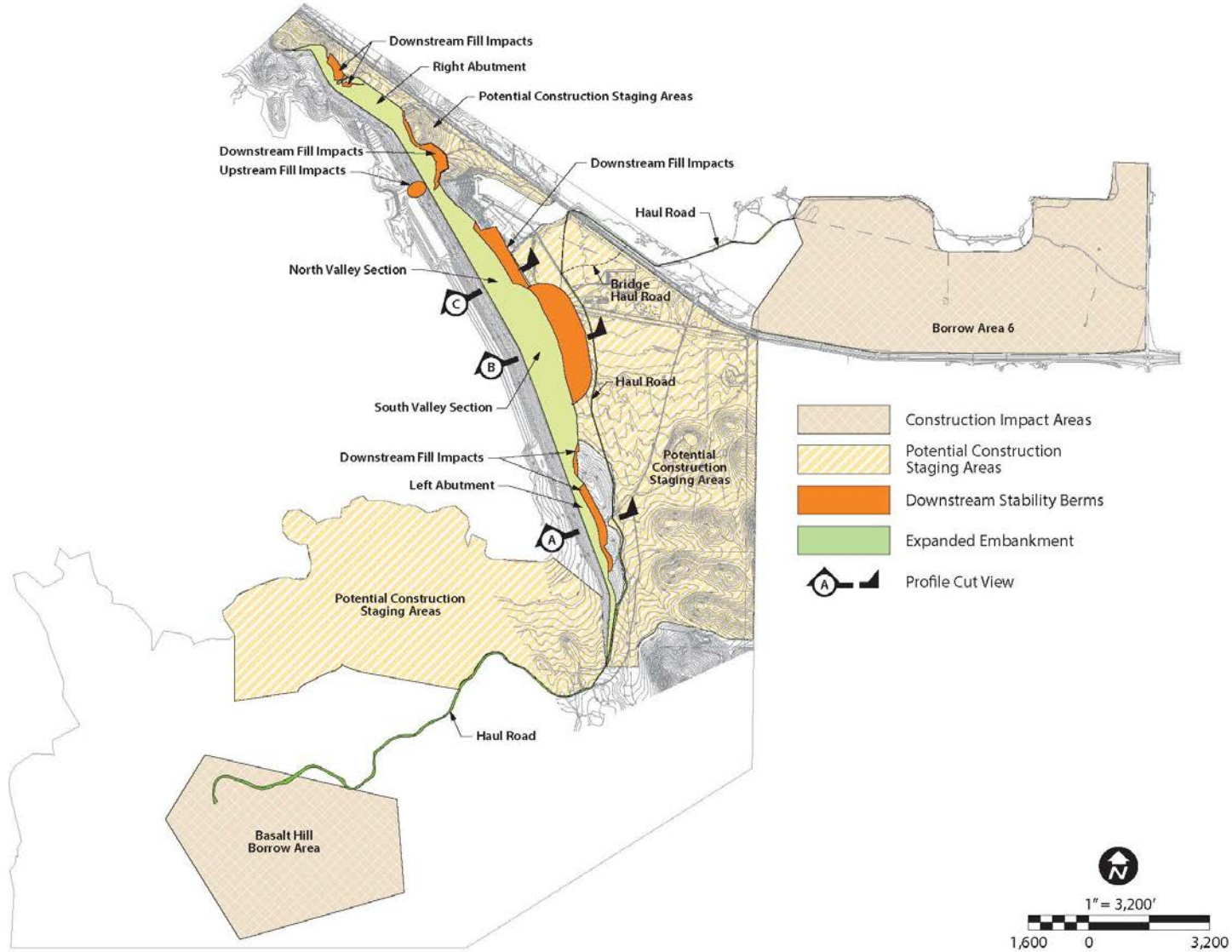


Figure 2. Construction, Staging, and Borrow Areas

B.F. SISK Dam

Safety of Dams Modification Project
Project Impacts

Datum: NAD 1983

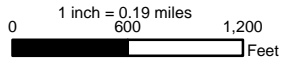
Prepared by:
Kaitlin Flahive, Bureau of Reclamation
2800 Cottage Way, Sacramento, CA, 95825

Service Layer Source Credits: ESRI, DigitalGlobe,
GeoEye, Earthstar Geographics, CNE S/Airbus DS,
USDA, USGS, AeroGRID, IGN



Impact

- Avoid
- Temporary
- Permanent
- Project Boundary 2018



37°43'0"N

37°40'N

121°6'0"W

121°5'30"W

121°5'0"W

121°4'30"W

B.F. SISK Dam

Safety of Dams Modification Project
Project Impacts

Datum: NAD 1983

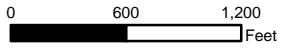
Prepared by:

Kaitlin Flahive, Bureau of Reclamation
2800 Cottage Way, Sacramento, CA, 95825

Service Layer Source Credits: ESRI, DigitalGlobe,
GeoEye, Earthstar Geographics, CNE S/Airbus DS,
USDA, USGS, AeroGRID, IGN



1 inch = 0.19 miles



Impact

- Avoid
- Permanent
- Temporary
- Project Boundary 2018



B.F. SISK Dam

Safety of Dams Modification Project
Project Impacts

Datum: NAD 1983

Prepared by:

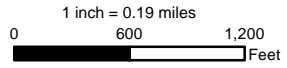
Kaitlin Flahive, Bureau of Reclamation

2800 Cottage Way, Sacramento, CA, 95825





Service Layer Source Credits: ESRI, DigitalGlobe,

GeoEye, Earthstar Geographics, CNE S/Airbus DS,

USDA, USGS, AeroGRID, IGN



Impact

-  Avoid
-  Temporary
-  Permanent
-  Project Boundary 2018





B.F. SISK Dam

Safety of Dams Modification Project
Project Impacts

Datum: NAD 1983

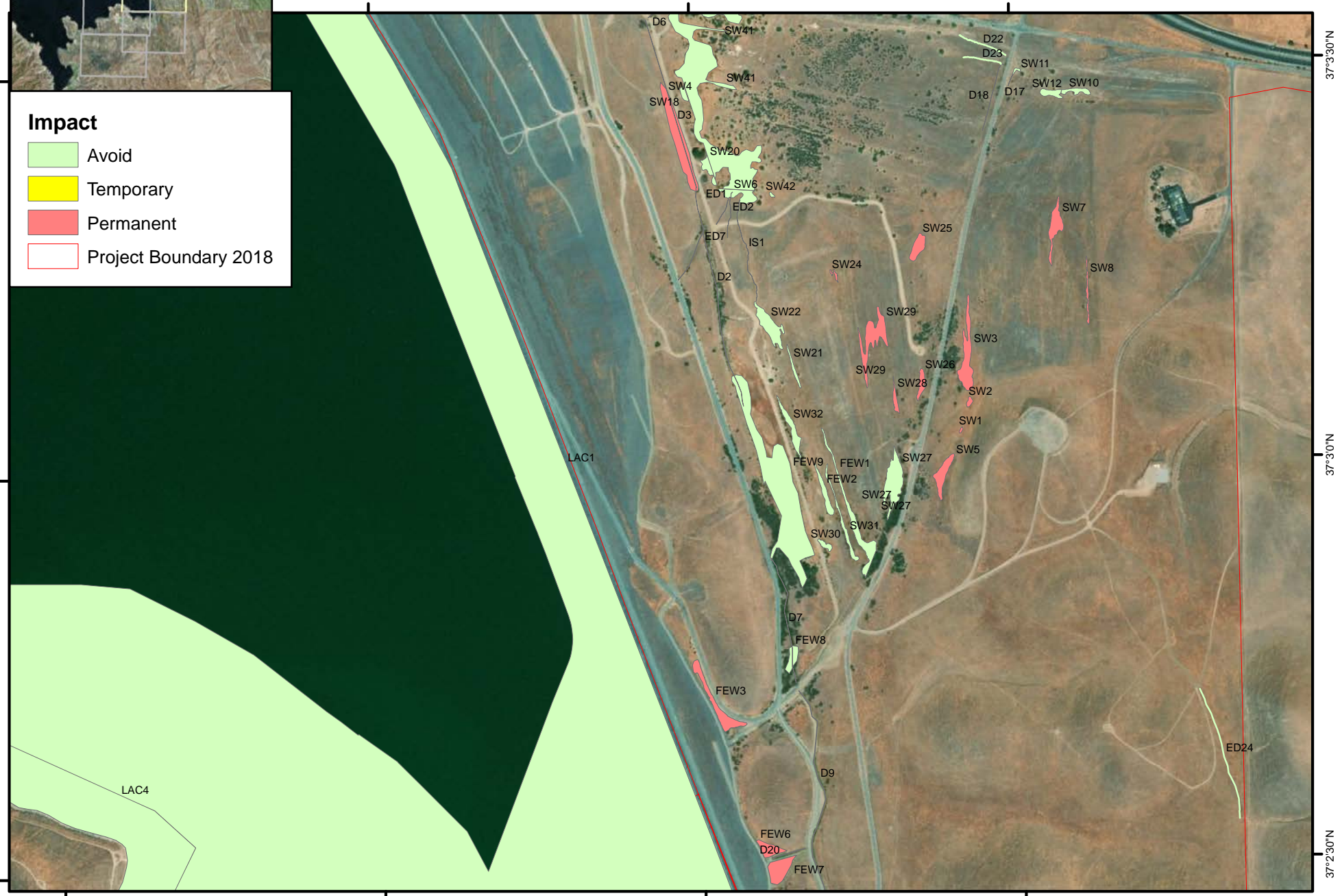
Prepared by:
Kaitlin Flahive, Bureau of Reclamation
2800 Cottage Way, Sacramento, CA, 95825
Service Layer Source Credits: ESRI, DigitalGlobe,
GeoEye, Earthstar Geographics, CNE S/Airbus DS,
USDA, USGS, AeroGRID, IGN



1 inch = 0.19 miles
0 600 1,200
Feet

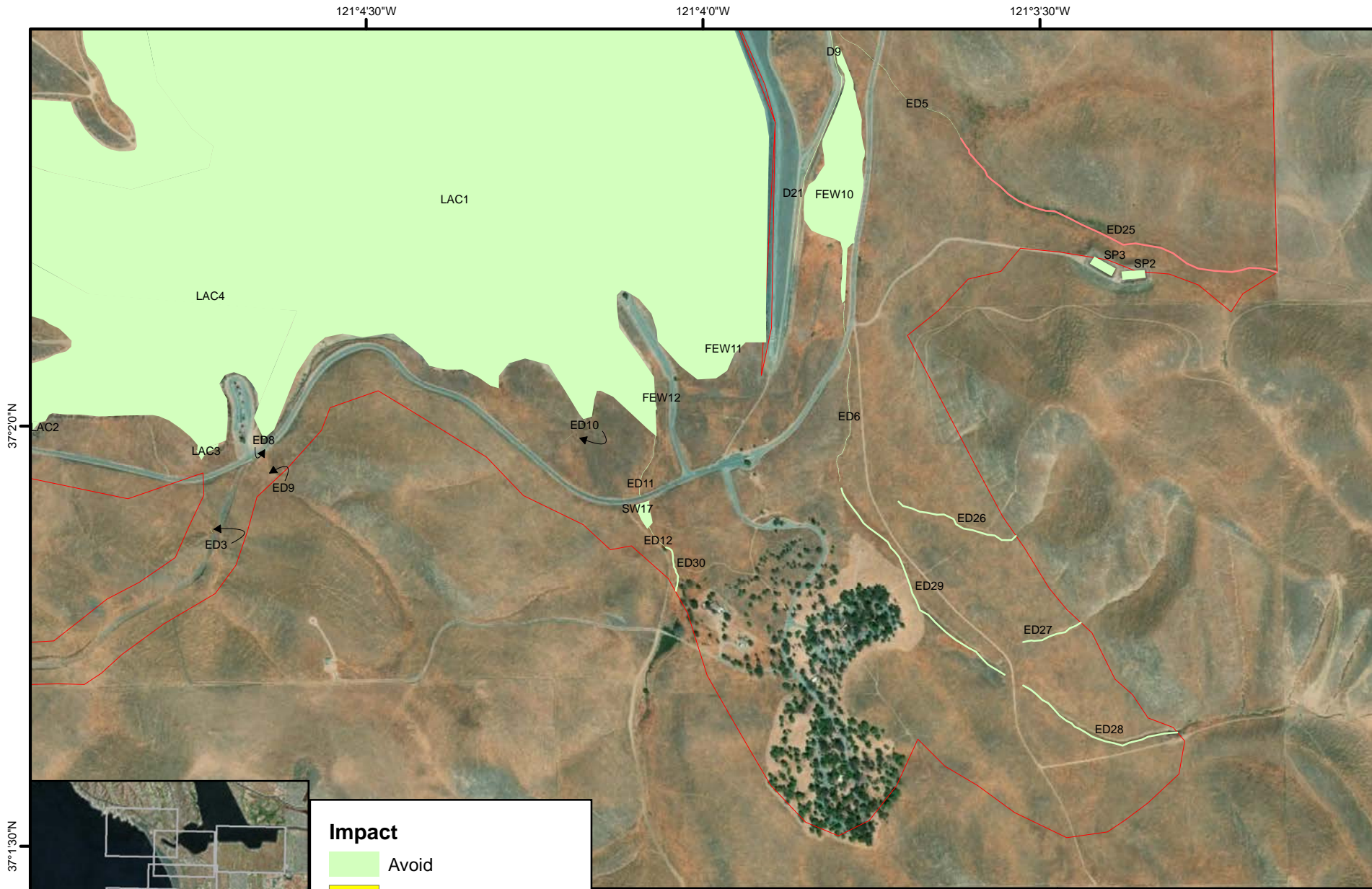
Impact

- Avoid
- Temporary
- Permanent
- Project Boundary 2018



121°5'0"W 121°4'30"W 121°4'0"W 121°3'30"W

37°3'0"N
37°3'0"N
37°2'30"N

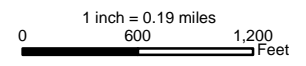


Impact

- Avoid
- Temporary
- Permanent
- Project Boundary 2018

B.F. SISK Dam

Safety of Dams Modification Project
Project Impacts



Datum: NAD 1983
 Prepared by:
 Kaitlin Flahive, Bureau of Reclamation
 2800 Cottage Way, Sacramento, CA, 95825
 Service Layer Source Credits: ESRI, DigitalGlobe,
 GeoEye, Earthstar Geographics, CNE S/Airbus DS,
 USDA, USGS, AeroGRID, IGN



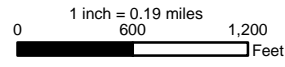
Impact

- Avoid
- Temporary
- Permanent
- Project Boundary 2018



B.F. SISK Dam

Safety of Dams Modification Project
Project Impacts



Datum: NAD 1983
Prepared by:
Kaitlin Flahive, Bureau of Reclamation
2800 Cottage Way, Sacramento, CA, 95825
Service Layer Source Credits: ESRI, DigitalGlobe,
GeoEye, Earthstar Geographics, CNE S/Airbus DS,
USDA, USGS, AeroGRID, IGN



121°6'0"W

121°5'30"W

121°5'0"W

121°4'30"W

37°2'30"N

37°2'0"N

B.F. SISK Dam

Safety of Dams Modification Project
Project Impacts

Datum: NAD 1983
Prepared by:
Kaitlin Flahive, Bureau of Reclamation
2800 Cottage Way, Sacramento, CA, 95825
Service Layer Source Credits: ESRI, DigitalGlobe,
GeoEye, Earthstar Geographics, CNE S/Airbus DS,
USDA, USGS, AeroGRID, IGN

