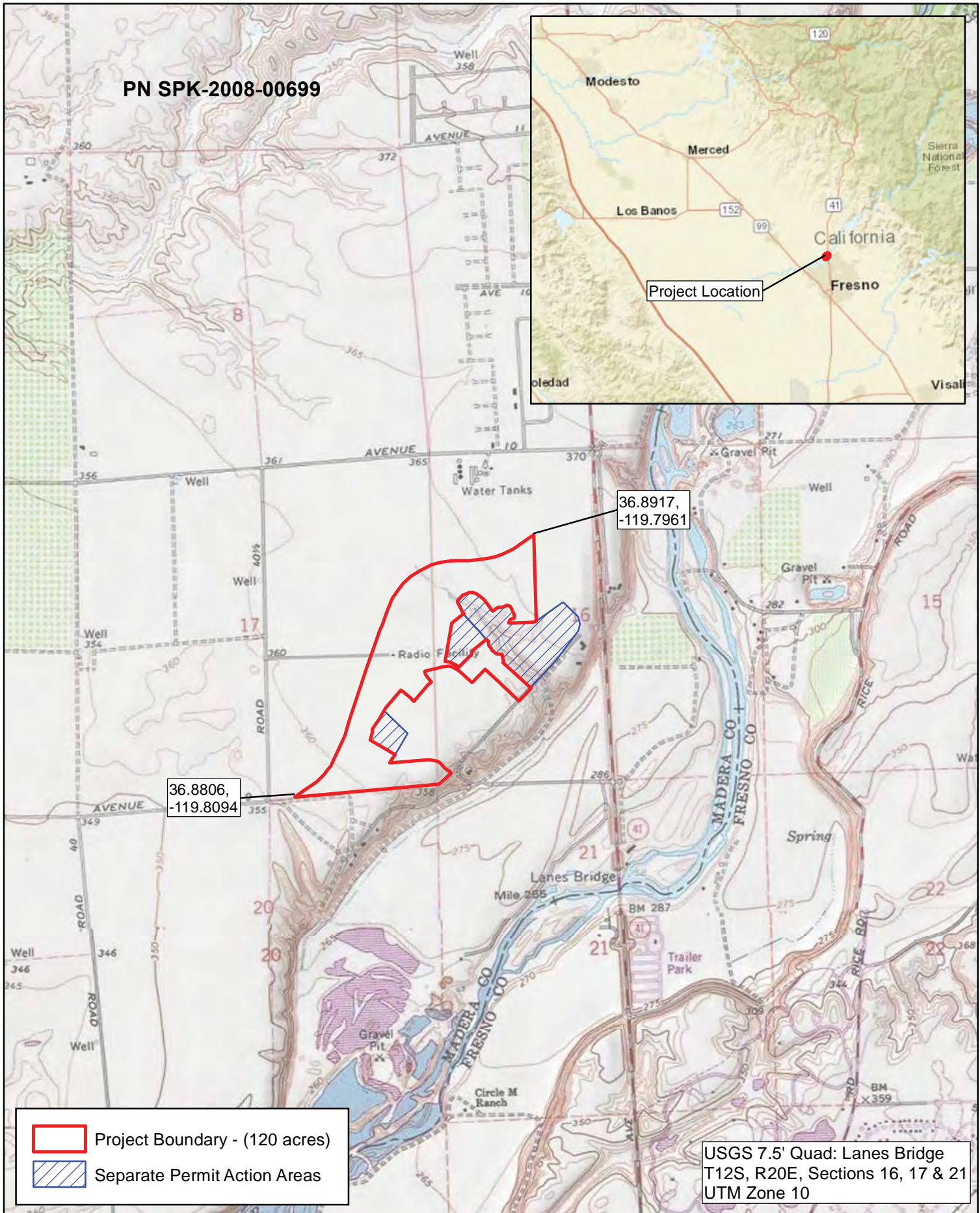

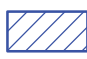
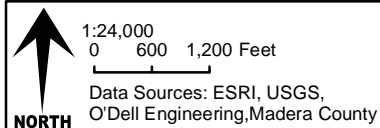


PN SPK-2008-00699



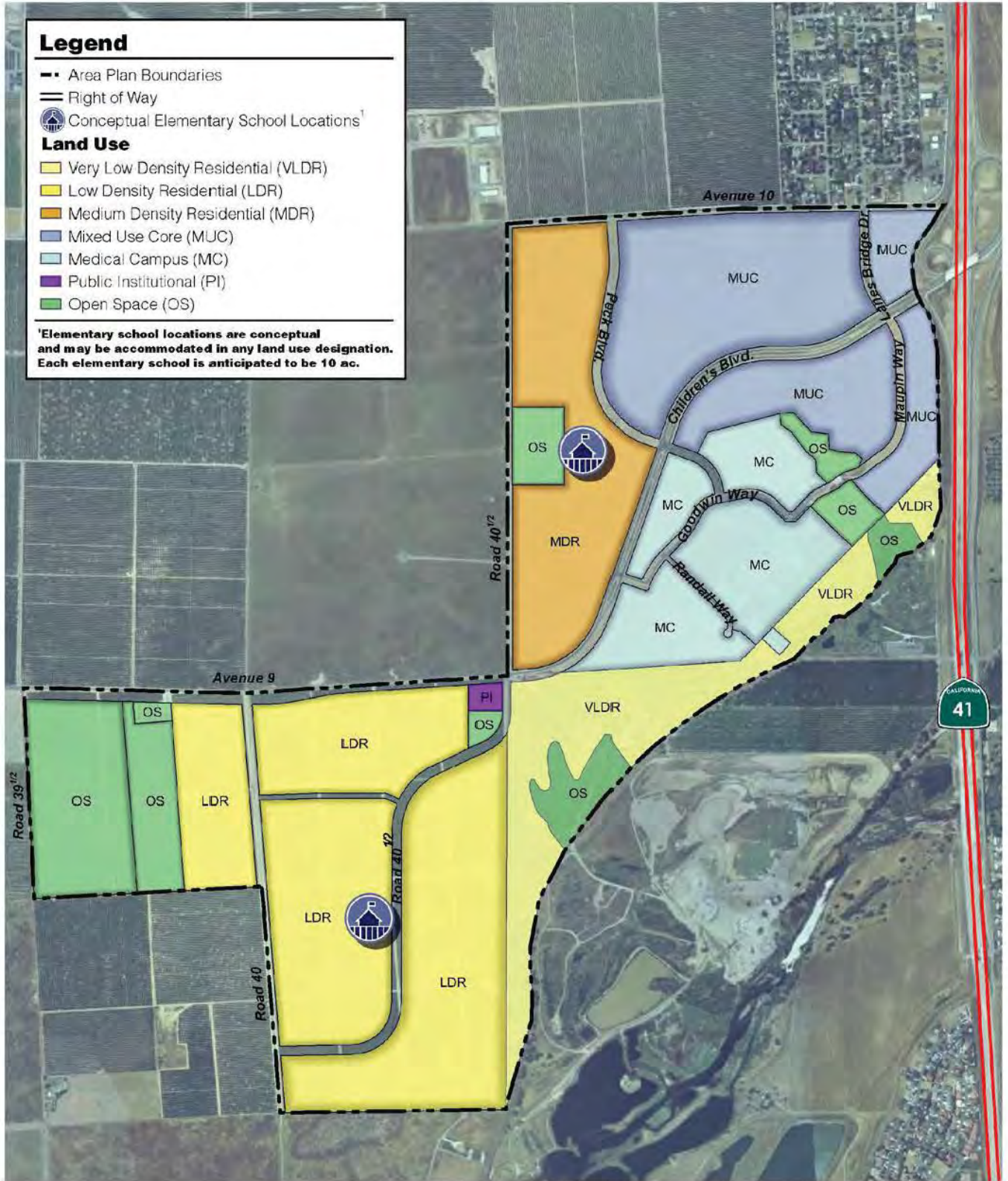
-  Project Boundary - (120 acres)
-  Separate Permit Action Areas

USGS 7.5' Quad: Lanes Bridge
T12S, R20E, Sections 16, 17 & 21
UTM Zone 10



Valley Children's Hospital Infrastructure Project
Regional Location
Figure 1

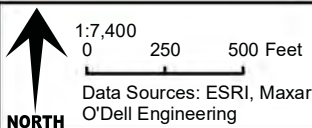




PN SPK-2008-00699



Valley Children's Hospital Infrastructure Project
 Gunner Ranch West Land Use Plan
 Figure 2



Valley Children's Hospital Infrastructure Project
Site Plan
Figure 3

SWP 9 - 0.02 acres

NWC 1 - 0.10 acres

SWP 6 - 0.04 acres

SWP 10 - 0.03 acres

SWP 7/ Pool 74 - 0.10 acres

SWP 12 - 0.10 acres

SWP 8/ Pool 75 - 0.02 acres

SPW 11 - 0.32 acres

SWP 13 / Pool 99 - 0.02 acres

SWP 14/Pool 98 - (0.05 acres)

SWP 15 - (0.02 acres)

SWP 16 - (0.02 acres)

SWP 20/Pool 91 - (0.09 acres)

SWP 19/Pool 89 - (0.16 acres)

Peck Blvd
Children's Blvd

Avenue 9

41

Project Boundary - (120 acres)

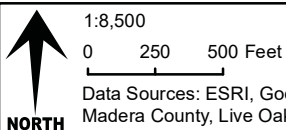
Separate Permit Action Areas

Impacts to WOTUS - (1.05 acres)*

Impacts to Wetland Features - (0.99 acres)

Impacts to Non-wetland Channel - (540.7 linear feet, 0.06 acres)

*SPK - 2008 - 00699, Live Oaks Associates, Inc. September 15, 2009 "Gunner Ranch West Waters of the U.S." Delineation. Corps PJD, 9/16/2009



Data Sources: ESRI, Google Earth 8/23/2018, Madera County, Live Oaks Associates, Inc.



Valley Children's Hospital Infrastructure Project
Impacts to Waters of the U.S.


Figure 4

gallaway
ENTERPRISES

GE# 19-020 Map Date: 05/26/20



 Project Boundary - (120 acres)
 Separate Permit Action Areas


1:7,400
0 250 500 Feet
Data Sources: ESRI, Maxar 11/07/2019,
O'Dell Engineering

Valley Children's Hospital Infrastructure Project
Project Location
Figure 2

PLAN REVISIONS		
NO.	DATE	REVISION



1165 Scenic Drive, Suite A
Modesto, CA 95350
odellengineering.com

EXHIBIT
VALLEY CHILDREN'S HOSPITAL
WETLANDS FILL
MADERA, CALIFORNIA

SOUTHWEST
CAMPUS -
ALTERNATIVE 1
(NO FILL)

Figure 6b.

APPROVED: _____

DESIGNED: KS
DRAWN: AM
CHECKED: KS
SCALE: 1"=100'
DATE: 5/21/2020
JOB NO.: 36941
FILE NO.: 36941-VCH WETLAND FILL EXHIBIT

SHEET NO.
1
OF
1



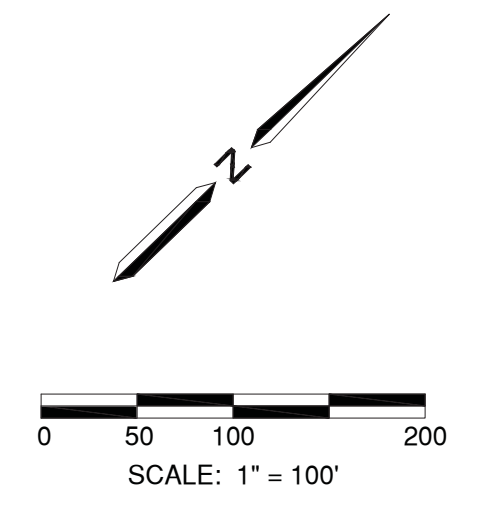
PN SPK-2008-00699

ALTERNATIVE 1 - NO FILL

H:\36941-VCH On Call CWA\CWA\Exhibits\Wetland Fill Application\36941-VCH Wetland Fill Exhibit - Alternative 1.dwg amriscod 13.25.21 05/21/2020



PLAN REVISIONS		
NO.	DATE	REVISION



1165 Scenic Drive, Suite A
Modesto, CA 95350
odellengineering.com

EXHIBIT
VALLEY CHILDREN'S HOSPITAL
WETLANDS FILL
MADERA, CALIFORNIA

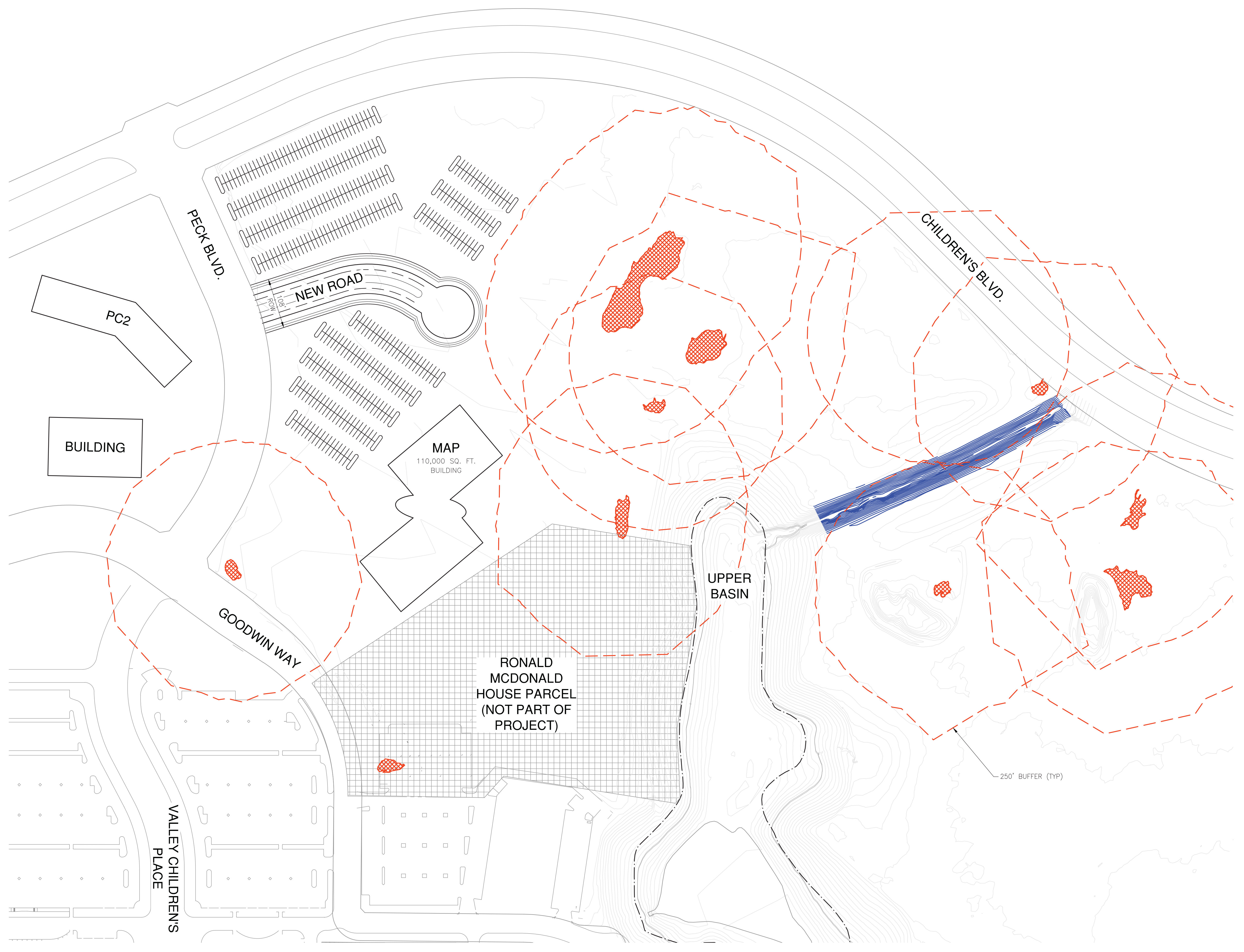
NORTHEAST
CAMPUS -
ALTERNATIVE 1
(NO FILL)

Figure 6a.

APPROVED: _____

DESIGNED: KS
DRAWN: AM
CHECKED: KS
SCALE: 1"=100'
DATE: 5/21/2020
JOB NO.: 36941
FILE NO.: 36941-VCH WETLAND FILL EXHIBIT

SHEET NO.
1
OF
1

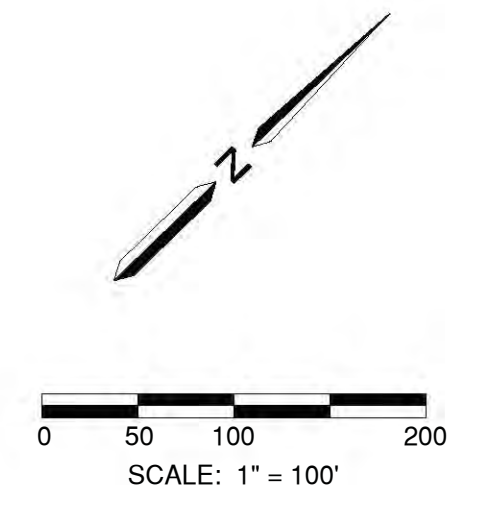


PN SPK-2008-00699

ALTERNATIVE 1 - NO FILL

H:\36941-VCH On Call Civil\Civil\Exhibits\Wetland Fill Application\36941-VCH Wetland Fill Exhibit - Alternative 1.dwg amarisco 10/26/21 05/21/2020

PLAN REVISIONS		
NO.	DATE	REVISION



1165 Scenic Drive, Suite A
Modesto, CA 95350
odellengineering.com

EXHIBIT
VALLEY CHILDREN'S HOSPITAL
WETLANDS FILL
MADERA, CALIFORNIA

NORTHEAST CAMPUS - ALTERNATIVE 2

Figure 7a

APPROVED: _____

DESIGNED: KS
DRAWN: AM
CHECKED: KS
SCALE: 1"=100'
DATE: 5/21/2020
JOB NO.: 36941
FILE NO.: 36941-VCH WETLAND FILL EXHIBIT

SHEET NO.
1
OF
1



ALTERNATIVE 2

PN SPK-2008-00699



H:\36941-VCH On Call CWA\CWA\Exhibits\Wetland Fill Application\36941-VCH Wetland Fill Exhibit - Alternative 3.dwg amriscoll 14.09.21 05/21/2020

PLAN REVISIONS		
NO.	DATE	REVISION



1165 Scenic Drive, Suite A
Modesto, CA 95350
odellengineering.com

EXHIBIT
VALLEY CHILDREN'S HOSPITAL
WETLANDS FILL
MADERA, CALIFORNIA

SOUTHWEST
CAMPUS -
ALTERNATIVE 2

Figure 7b

APPROVED:

DESIGNED: KS
DRAWN: AM
CHECKED: KS
SCALE: 1" = 100'
DATE: 5/21/2020
JOB NO.: 36941
FILE NO.: 36941-VCH WETLAND FILL EXHIBIT

SHEET NO.
1
OF
1



PN SPK-2008-00699

ALTERNATIVE 2

H:\36941-VCH On Call Civil\Civil\Exhibits\Wetland Fill Application\36941-VCH Wetland Fill Exhibit - Alternative 2.dwg amariseal 10/26/21 05/21/2020



PLAN REVISIONS		
NO.	DATE	REVISION



1165 Scenic Drive, Suite A
Modesto, CA 95350
odellengineering.com

EXHIBIT
VALLEY CHILDREN'S HOSPITAL
WETLANDS FILL
MADERA, CALIFORNIA

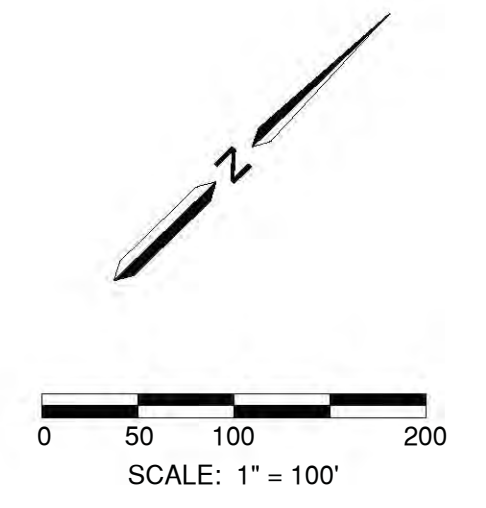
NORTHEAST
CAMPUS -
ALTERNATIVE 3
(PREFERRED
ALTERNATIVE)

Figure 8a

APPROVED:

DESIGNED: KS
DRAWN: AM
CHECKED: KS
SCALE: 1"=100'
DATE: 5/21/2020
JOB NO.: 36941
FILE NO.: 36941-VCH WETLAND FILL EXHIBIT

SHEET NO.
1
OF
1



ALTERNATIVE 3 - PREFERRED ALTERNATIVE

PN SPK-2008-00699



H:\36941-VCH On Call CWA\Exhibits\Wetland Fill Application\36941-VCH Wetland Fill Exhibit - Alternative 2.dwg amriscal 14.40.21 05/21/2020

PLAN REVISIONS		
NO.	DATE	REVISION

PN SPK-2008-00699



1165 Scenic Drive, Suite A
Modesto, CA 95350
odellengineering.com

EXHIBIT
VALLEY CHILDREN'S HOSPITAL
WETLANDS FILL
MADERA, CALIFORNIA

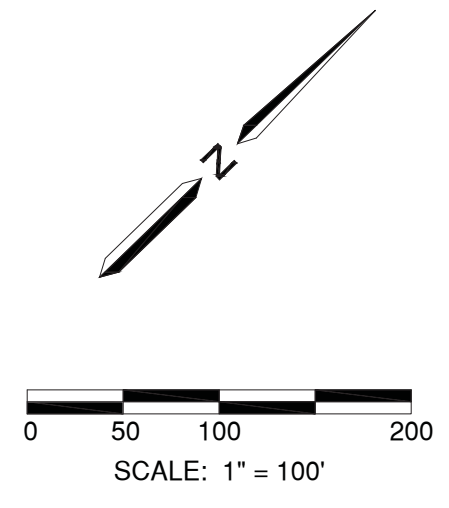
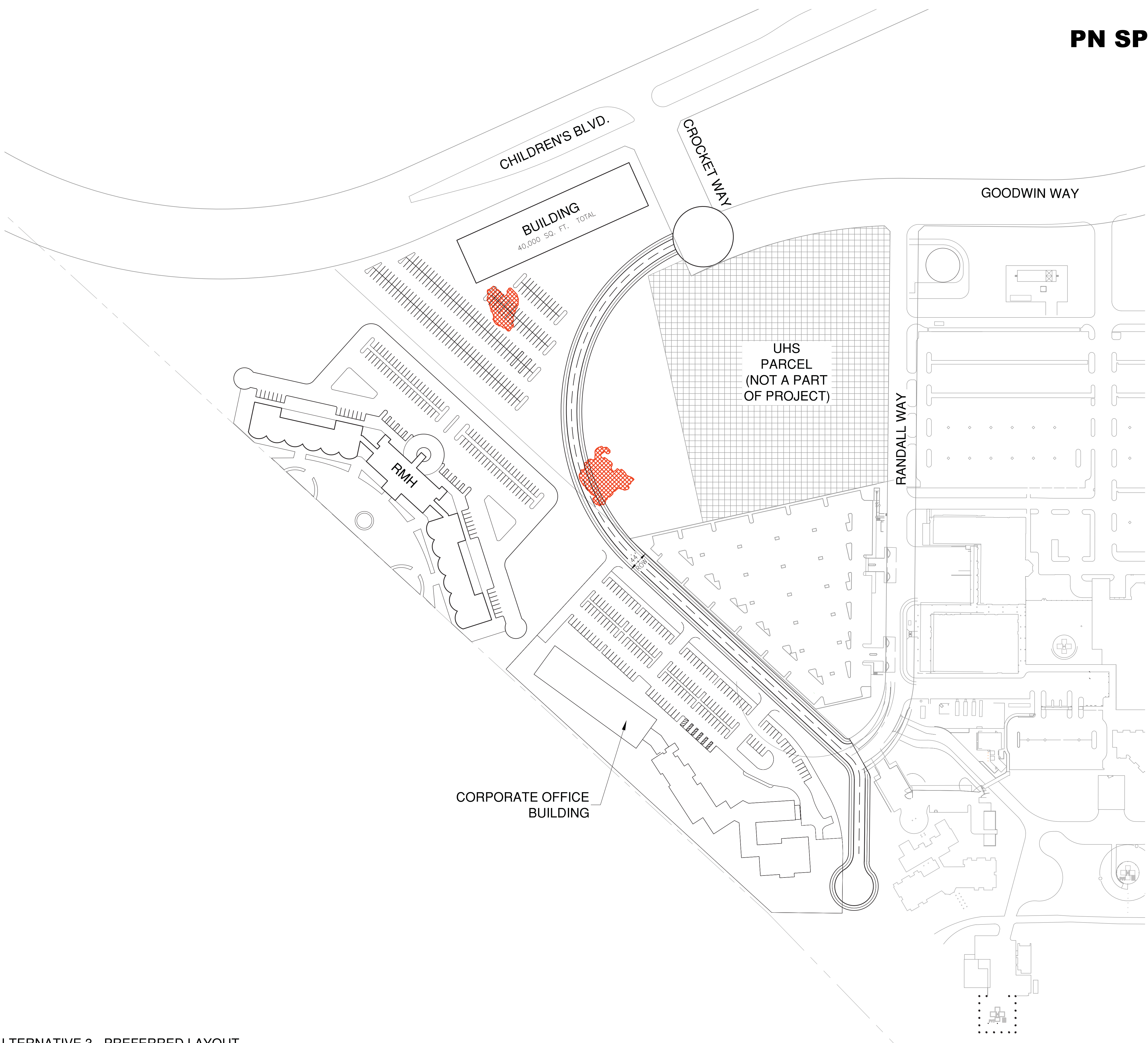
SOUTHWEST CAMPUS - ALTERNATIVE 3 (PREFERRED LAYOUT)

Figure 8b

APPROVED: _____

DESIGNED: KS
DRAWN: AM
CHECKED: KS
SCALE: 1" = 100'
DATE: 5/21/2020
JOB NO.: 36941
FILE NO.: 36941-VCH WETLAND FILL EXHIBIT

SHEET NO.
1
OF
1



ALTERNATIVE 3 - PREFERRED LAYOUT

H:\36941-VCH On Call Civil\Civil\Exhibits\Wetland Fill Application\36941-VCH Wetland Fill Exhibit - Alternative 3.dwg amariseol 10/31/21 05/21/2020